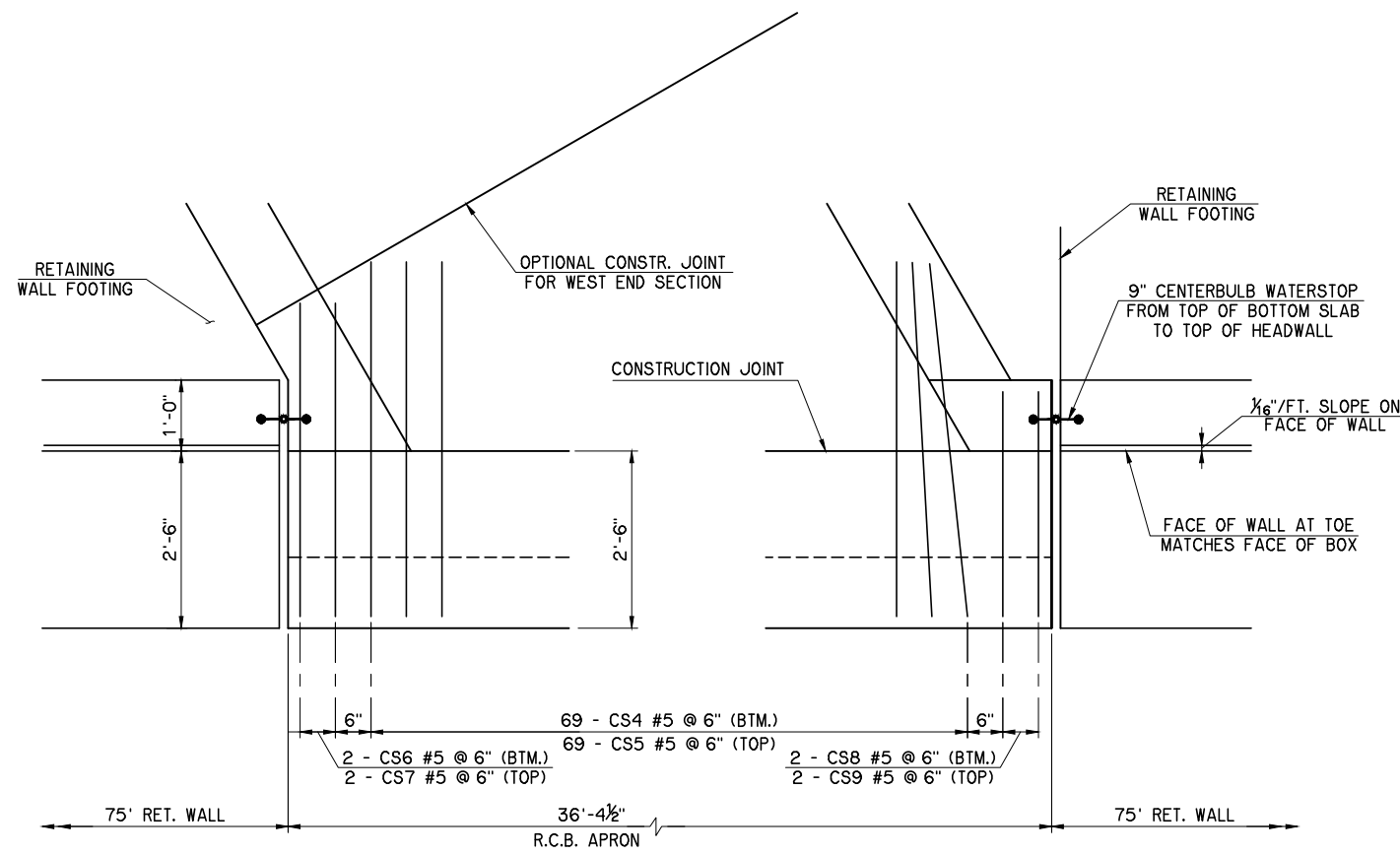
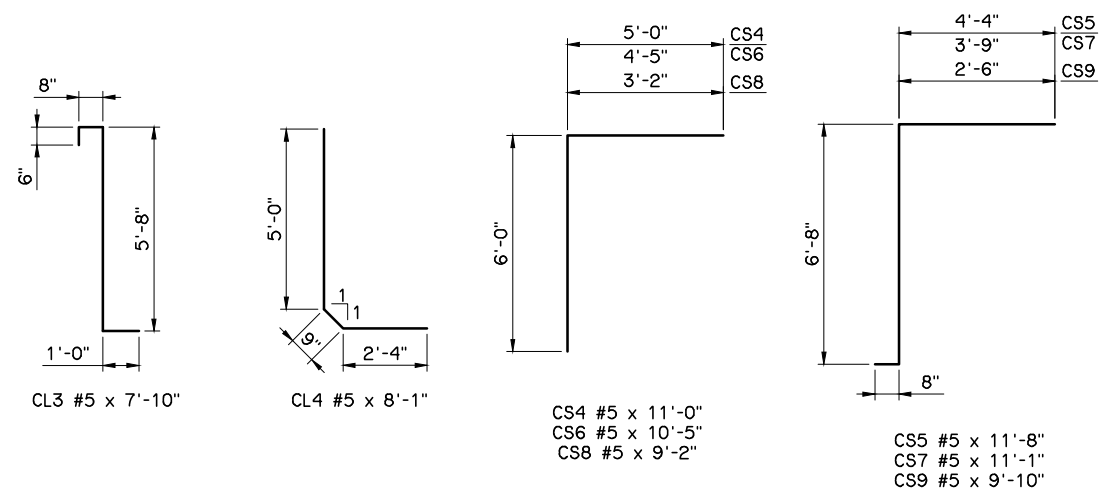


REV. NO.	DESCRIPTION	DATE



WEST R.C.B. APRON

NOTE:
SEE STD. RCB-E2-H9-30-2 FOR ADDITIONAL REINFORCING EXCEPT USE CL3 AND CL4 BARS IN LIEU OF CL1 AND CL2 BARS. OMIT WD1 AND AC1 BARS SHOWN FOR WING AND APRON.



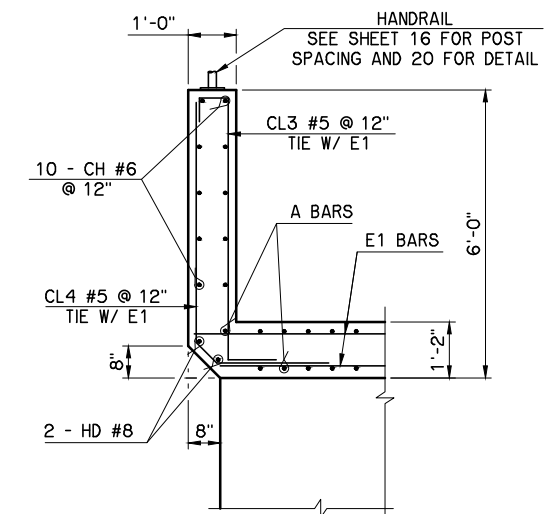
WEST END SECTION QUANTITIES		
ITEM	UNIT	TOTAL
CLASS A CONCRETE	C.Y.	18.8
REINFORCING STEEL	LB.	3,520

NOTE:
QUANTITIES INCLUDE CUSTOM HEADWALL, APRON AND CURTAIN WALL

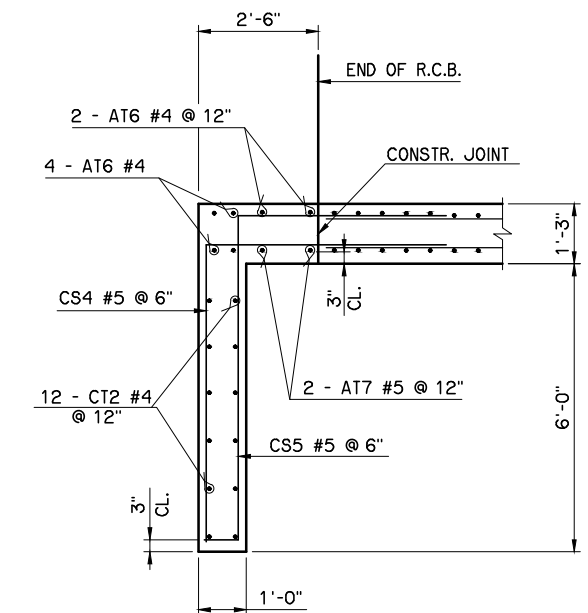
WEST HEADWALL BAR LIST				
MARK	SIZE	NO.	FORM	LENGTH
REINFORCING BARS				
CH	#6	10	STR.	36'-0"
CL3	#5	34	BNT.	7'-10"
CL4	#5	34	BNT.	8'-1"
HD	#8	2	STR.	36'-0"

WEST APRON & CURTAIN WALL BAR LIST				
MARK	SIZE	NO.	FORM	LENGTH
REINFORCING BARS				
AT6	#4	6	STR.	36'-0"
AT7	#5	2	STR.	36'-0"
CS4	#5	69	BNT.	11'-0"
CS5	#5	69	BNT.	11'-8"
CS6	#5	2	BNT.	10'-5"
CS7	#5	2	BNT.	11'-1"
CS8	#5	2	BNT.	9'-2"
CS9	#5	2	BNT.	9'-10"
CT2	#4	12	STR.	36'-0"

NOTE:
FOR WEST END SECTION BAR LIST, SEE END CONNECTION BAR LIST ON STD. RCB-E2-H9-30-2



HEADWALL DETAIL AT MIDSPAN



CURTAIN WALL DETAIL

S.H. 44 OVER DRY ELK CREEK	WASHITA COUNTY	Design	AFW
R.C.B. DETAILS		Detail	DRB
		Check	AFW
STATE OF OKLAHOMA		WHITE ENGINEERING ASSOCIATES	
DEPARTMENT OF TRANSPORTATION		JOB PIECE NO. 28774(O4)	
		SHEET NO. 15	